

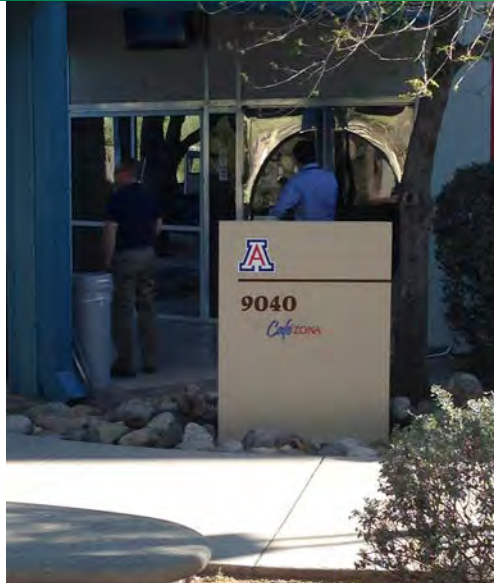
FOR SUBLEASE

# PLUG & PLAY CALL CENTER SPACE AT UA SCIENCE & TECH PARK

9072

**SOUTH RITA ROAD**

Tucson, AZ 85747



## PROPERTY INFORMATION

<b>Address/Location:</b>	9072 S. Rita Road at University of Arizona Science and Tech Park
<b>Sublease Premises:</b>	Approximately 48,436 SF
<b>Availability:</b>	Immediately
<b>Sublease Term:</b>	Through July 31, 2019
<b>Parking:</b>	6.7 spaces/1,000 SF
<b>Rental Rate:</b>	\$16.50/SF Modified Gross
<b>Condition:</b>	Fully furnished, steel case furniture in place, 512 seats, UPS, backup generator
<b>Corporate Neighbors:</b>	OptumRx, Raytheon, IBM, NP Photonics, Oracle Corporation, Arizona Center for Innovation



## CONTACT US

### TIM HEALY

Vice President  
+1 520 323 5119  
tim.healy@cbre.com

### BOB DELANEY

Vice President  
+1 520 323 5171  
robert.delaney@cbre.com

[www.cbre.com/tim.healy](http://www.cbre.com/tim.healy)

**CBRE**

# FOR SUBLEASE PLUG & PLAY CALL CENTER SPACE AT UA SCIENCE & TECH PARK

9072  
SOUTH RITA ROAD  
Tucson, AZ 85747

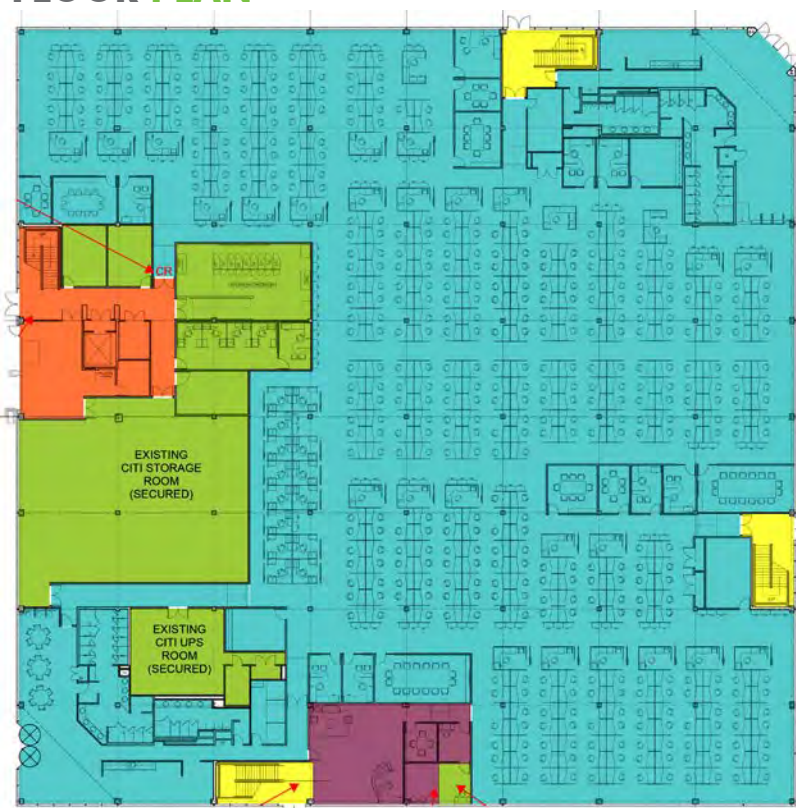


## AMENITIES

- + Dual-feed electrical system
- + On-site wells and water storage system
- + Fire and emergency services provided by Rural Metro Corporation
- + Park is zero-discharge facility—on-site waste water treatment and reuse
- + Recreational center including softball/soccer field, basketball court, tennis court and locker rooms
- + Health and wellness program
- + Conference and meeting facilities—fees may apply
- + Multi-internet service providers
- + Julian Wash Greenway, 3-mile, 65-acre linear park along the northside of the park with multi-use path, exercise and interpretive nodes
- + On-site café



## FLOOR PLAN



- Common space
- Citi space retained
- Elevator lobby
- Sublease space
- Reception area

### Space Breakdown

- 512 total seats (8 enclosed offices)
- 2 large conference rooms
- 6 smaller conference rooms
- 2 large copy rooms
- 2 sets of restrooms, 1 at each break area

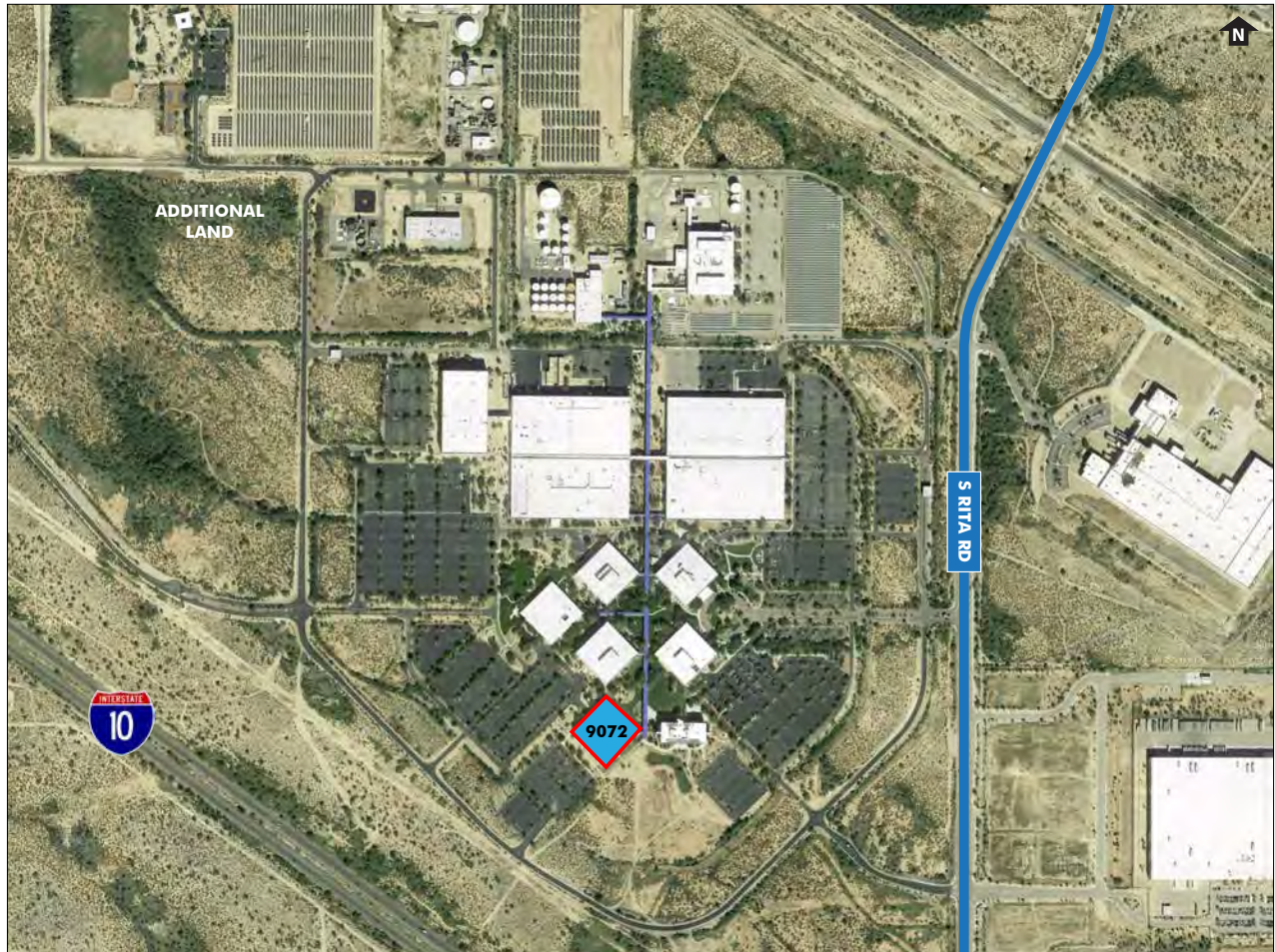
Not to scale.

FOR SUBLEASE  
**PLUG & PLAY CALL CENTER SPACE**  
**AT UA SCIENCE & TECH PARK**

**9072**  
**SOUTH RITA ROAD**  
Tucson, AZ 85747



**SITE PLAN**



[www.cbre.com/tim.healy](http://www.cbre.com/tim.healy)

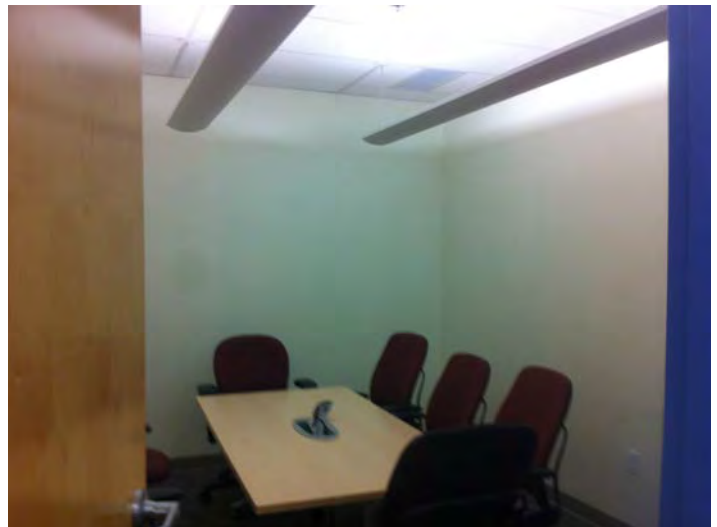
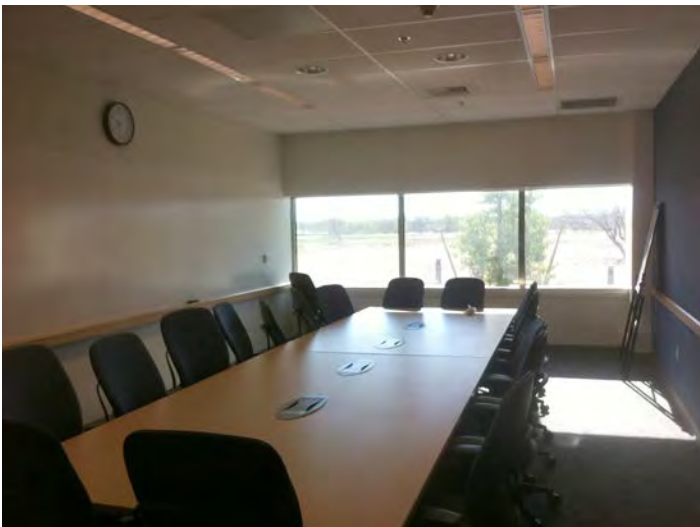
**CBRE**

FOR SUBLEASE  
**PLUG & PLAY CALL CENTER SPACE**  
**AT UA SCIENCE & TECH PARK**

9072  
**SOUTH RITA ROAD**  
Tucson, AZ 85747



**INTERIOR PHOTOS**



FOR SUBLEASE  
**PLUG & PLAY CALL CENTER SPACE**  
**AT UA SCIENCE & TECH PARK**

9072  
**SOUTH RITA ROAD**  
Tucson, AZ 85747



**INTERIOR PHOTOS**

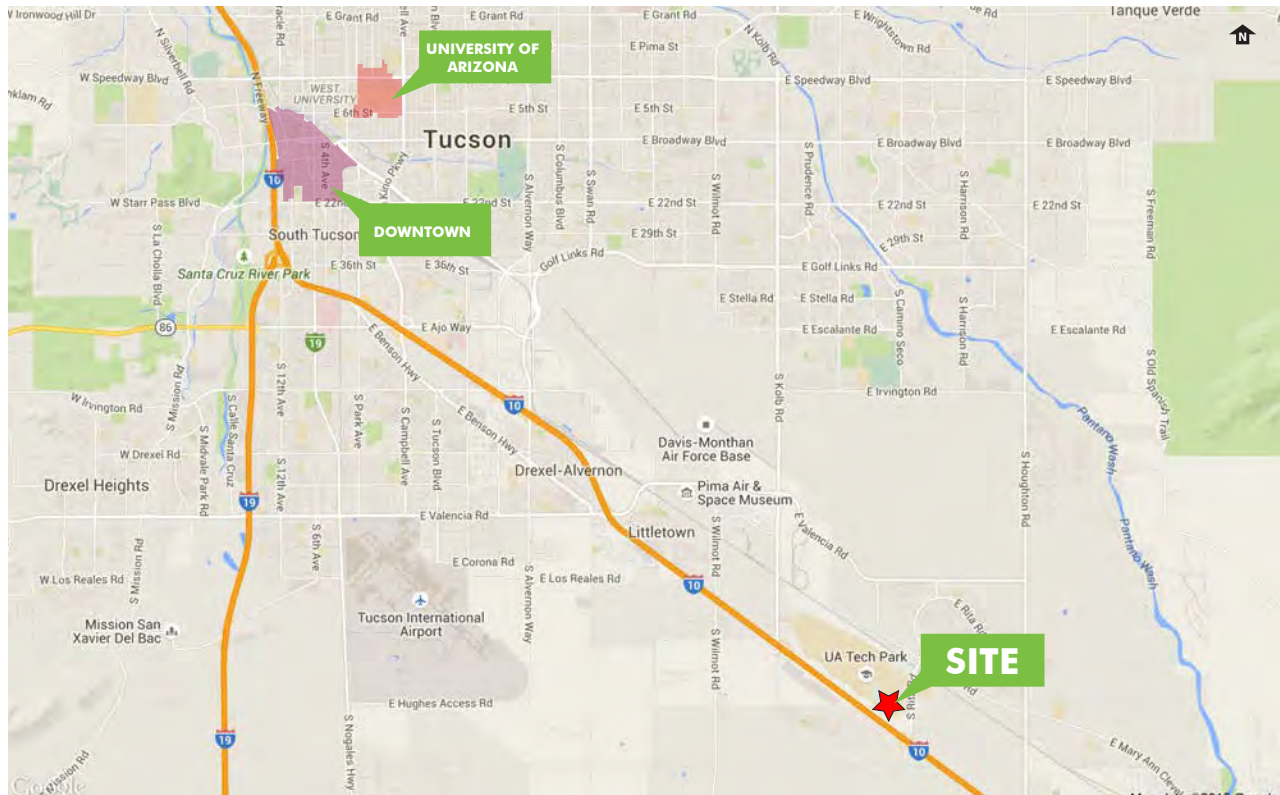


# FOR SUBLEASE PLUG & PLAY CALL CENTER SPACE AT UA SCIENCE & TECH PARK

9072  
SOUTH RITA ROAD  
Tucson, AZ 85747



## MAP



## CONTACT US

### TIM HEALY

Vice President  
+1 520 323 5119  
tim.healy@cbre.com

### BOB DELANEY

Vice President  
+1 520 323 5171  
robert.delaney@cbre.com

© 2016 CBRE, Inc. The information contained in this document has been obtained from sources believed reliable. While CBRE, Inc. does not doubt its accuracy, CBRE, Inc. has not verified it and makes no guarantee, warranty or representation about it. It is your responsibility to independently confirm its accuracy and completeness. Any projections, opinions, assumptions or estimates used are for example only and do not represent the current or future performance of the property. The value of this transaction to you depends on tax and other factors which should be evaluated by your tax, financial and legal advisors. You and your advisors should conduct a careful, independent investigation of the property to determine to your satisfaction the suitability of the property for your needs. CBRE and the CBRE logo are service marks of CBRE, Inc. and/or its affiliated or related companies in the United States and other countries. All other marks displayed on this document are the property of their respective owners.

[www.cbre.com/tim.healy](http://www.cbre.com/tim.healy)

**CBRE**